

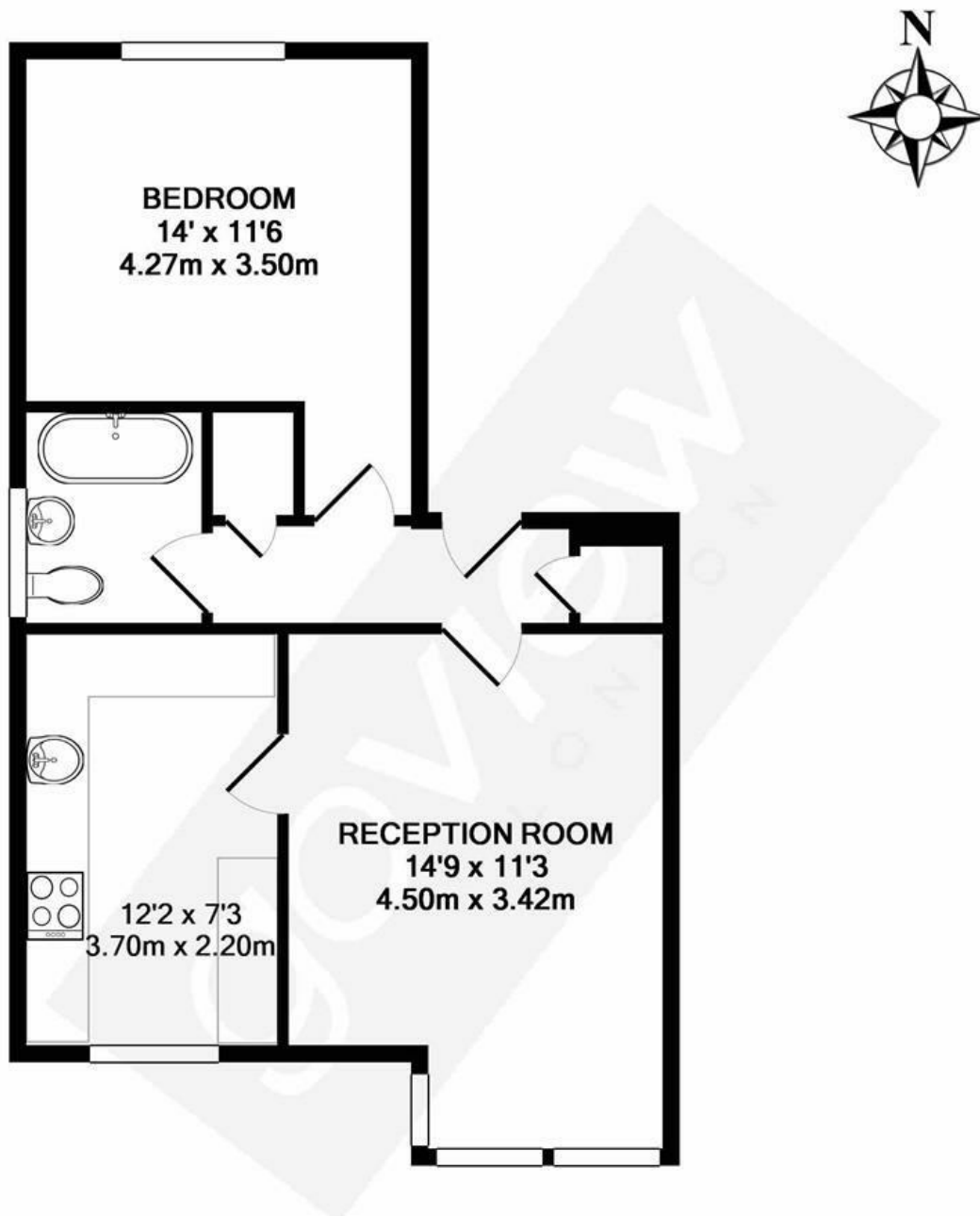


Glencairn Drive, W5

LONG LET. This well presented one bedroom ground floor flat offers great living space with neutral, modern decor throughout, located moments from Ealing Broadway.

- ONE BEDROOM FLAT
- SPACIOUS BEDROOM
- GOOD SIZE RECEPTION ROOM
- MODERN KITCHEN
- STYLISH BATHROOM
- CLOSE TO AMENITIES

£1,575 PCM



TOTAL APPROX. FLOOR AREA 457 SQ.FT. (42.5 SQ.M.)

Whilst every attempt has been made to ensure the accuracy of the floor plan contained here, measurements of doors, windows, rooms and any other items are approximate and no responsibility is taken for any error, omission, or mis-statement. This plan is for illustrative purposes only and should be used as such by any prospective purchaser. The services, systems and appliances shown have not been tested and no guarantee as to their operability or efficiency can be given

Made with Metropix ©2018

Energy Efficiency Rating		
	Current	Potential
Very energy efficient - lower running costs		
(92 plus) A		
(81-91) B		
(69-80) C		
(55-68) D		
(39-54) E		
(21-38) F		
(1-20) G		
Not energy efficient - higher running costs		
England & Wales		EU Directive 2002/91/EC 